

OPENING DOORS SINCE 1843

Loveitts<sup>est. 1843</sup>  
THE ESTATE AGENTS



Flat 3 Ashby Court  
Nuneaton, CV11 4JH

£89,950

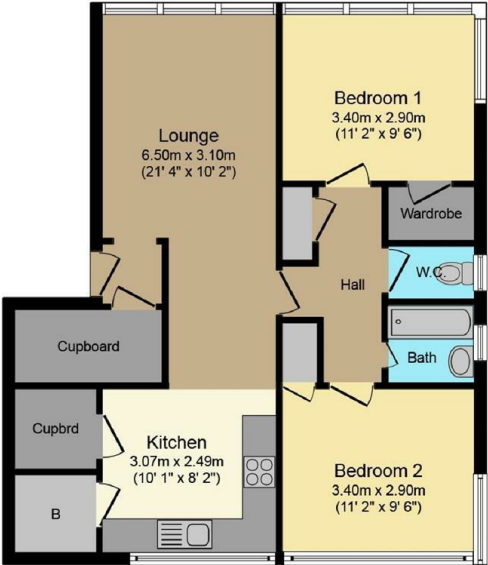




Flat 3 Ashby Court, Nuneaton, CV11 4JH

This purpose built first floor apartment briefly comprises entrance hall, lounge/dining room which opens into the kitchen having a range of eye and base level units with integrated gas hob and electric oven. Inner lobby, two bedrooms with built in cupboards/wardrobes, bathroom and a separate W.C. The property also benefits from gas fired central heating and PVCu double glazing. Outside there are communal gardens. The property would make an ideal first time buy or investment purchase and is being offered for sale with no upward chain.

Area Map

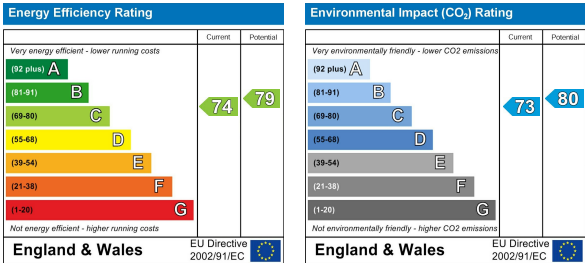


Floor area 69.1 sq. m. (744 sq. ft.) approx

Total floor area 69.1 sq. m. (744 sq. ft.) approx

This Floor Plan is for illustration purposes only and may not be representative of the property. The position and size of doors, windows and other features are approximate. Unauthorized reproduction prohibited. © PropertyBOX

Energy Efficiency Graph



These particulars, whilst believed to be accurate are set out as a general outline only for guidance and do not constitute any part of an offer or contract. Intending purchasers should not rely on them as statements of representation of fact, but must satisfy themselves by inspection or otherwise as to their accuracy. No person in this firms employment has the authority to make or give any representation or warranty in respect of the property.